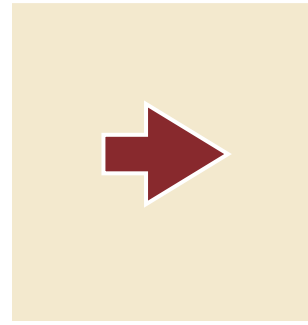
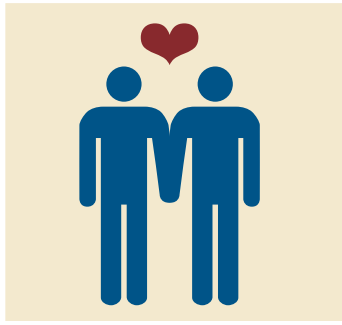


# TAKE the LONG VIEW

2009 ANNUAL REPORT



ONLINE

liberty@aclu-wi.org  
www.aclu-wi.org



@ACLUofWisconsin  
@ACLUMadison

**MILWAUKEE**  
207 EAST BUFFALO STREET  
SUITE 325  
MILWAUKEE, WI 53202-5774  
414.272.4032

**MADISON**  
122 STATE STREET  
SUITE 201  
MADISON, WI 53703-2500  
608.469.5540

207 E BUFFALO ST STE 325  
MILWAUKEE WI 53202-5774



NON-PROFIT ORG  
U.S. POSTAGE  
PAID  
MILWAUKEE, WI  
PERMIT NO. 2264



## TAKING the LONG VIEW for JUSTICE

TWO THOUSAND AND NINE WAS A YEAR MARKED BY OPTIMISM AND FRUSTRATION. A new federal administration brought hope of a recovery from the civil liberties abuses that characterize the War on Terror era. But we shared a frustration that recovery was slow, a frustration exacerbated by a major recession and a two-front war.

The lesson learned in the past decade and in the past century, however, remains the same. Through war and peace, through decline and renewal, the American Civil Liberties Union remains an important leader in the protection of civil liberties and rights in Wisconsin and across the country.

The ACLU of Wisconsin Foundation works to protect liberty through the courts and in the community. Our legal department gives voice to people who have experienced government abuse or discrimination. We will share just a few civil liberties stories of families facing eviction, prisoners denied basic health care and same-sex couples seeking recognition of their families. Taking the long view of justice, the ACLU of Wisconsin Foundation leverages talented staff, national legal resources, courageous clients, and volunteer attorney power to achieve victories as no other organization can.

The Foundation also supports our youth and educational programs. Giving real meaning to Constitutional rights, we work with young people to learn about free speech and how to interact with law enforcement. We support libraries facing threats of censorship when community members demand the removal of controversial books. We mobilize people of color to share their stories of racial profiling at the hands of police. Though everyday advocacy and education, we help people in Wisconsin see how the Constitution is a living document that protects each of us.

Looking back at 2009, we wish to thank our generous foundation and individual donors. Without their support and faith that recovery is possible, we couldn't change Wisconsin for the better.

Chris Ahmuty, Executive Director

Erik Guenther, Board President



West Bend book defender Professor Mark Peterson introduces readers at the 2009 Banned Books Week event at the Woodland Pattern Book Center

## THE WEST BEND COMMUNITY STANDS UP for BOOKS

When staff at the West Bend Community Library faced complaints about age-appropriate, gay-themed books in their young adult section, the ACLU of Wisconsin provided support and resources to local book defenders. We helped local citizens who believed that censors should not pressure libraries to take away the rights of parents and young people to have full access to information, including unbiased portrayals of LGBT characters in books.

"Had it not been for the backing and encouragement of the ACLU of Wisconsin, the outcome of the dispute might well have resulted in the suppression of the right to think and read freely," said library director Michael Tyree. "Because of the information and organizing help through the combined efforts of the ACLU, the American Library Association and our supportive community members, our patrons can still practice the most basic freedom in a democracy: the right to read."

Each year we recognize Banned Books Week by educating the public about the history and current threats of censorship.

## JOIN THE ACLU OF WISCONSIN ONLINE

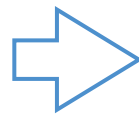
More information about us, including news and past annual reports, can be found on our **new and improved website, [www.aclu-wi.org](http://www.aclu-wi.org)**.

Join us on Facebook and Twitter to get more ACLU of Wisconsin news and information — find us @ACLUofWisconsin and @ACLUMadison.



## VISION STATEMENT

The ACLU of Wisconsin envisions a society in which a strong, growing and diverse network of people along with public and private institutions understand, value and work to protect civil liberties and rights.



## AFFORDABLE AND FAIR HOUSING

# WINNING the FIGHT for SOUTH MILWAUKEE'S LAKE BLUFF APARTMENTS

Residents of affordable housing in South Milwaukee will be able to stay in their homes after the ACLU of Wisconsin won a victory against housing discrimination in July 2009. The City of South Milwaukee had been trying to tear down this integrated and accessible housing complex, but the ACLU of Wisconsin legal team convinced a federal court jury that razing the Lake Bluff apartments would discriminate against people of color and people with disabilities.

Lake Bluff plaintiff Cheryl Batchelor with her neighbors Jesse Survillion, Jr., and Jaden Survillion.

## BEYOND LEGISLATION: WORKING to MAINTAIN BASIC PROTECTIONS

### SAME-SEX COUPLES THE FIGHT to PROTECT DOMESTIC PARTNERSHIPS CONTINUES



The Wisconsin Supreme Court dismissed a challenge to the state's recently enacted domestic partner-

ship registry in November of 2009. The ACLU of Wisconsin and the five couples we represented to defend the registry maintained that Wisconsin's recognition of domestic partnerships did not come close to being "substantially similar" to marriage. The Court rejected a request from board members of Wisconsin Family Action to declare the registry unconstitutional without going through a trial. The ACLU of Wisconsin Foundation will continue to work to defend the recognition and rights of same-sex couples.

### CONTRACEPTIVE EQUITY AND COMPREHENSIVE SEXUALITY EDUCATION AFTER A BILL BECOMES LAW



The ACLU of Wisconsin works to monitor the implementation of two new laws providing for access to

contraception in insurance coverage and medically accurate information on sexual health in public schools. We're watching for companies and religious employers who don't comply with new insurance regulations that require the inclusion of contraception coverage for female workers. We are also providing information to public schools on the 2010 Healthy Youth Act which requires schools that teach sex ed to provide a comprehensive curriculum.

### PRISONERS' RIGHTS PROGRESS on BASIC MEDICAL and MENTAL HEALTH CARE



The ACLU of Wisconsin legal department made major advances on behalf of the female prison-

ers of the Taycheedah Correctional Institution in 2009. Early in the year, a federal judge ordered that nurses, not untrained guards, distribute medications. In November, the judge denied a request from the state to dismiss the lawsuit and ordered a trial to decide whether the inhumane lack of medical and mental health care violates the constitution. By persistent pursuit of this case, we have already achieved significant reform and will continue to seek needed, basic medical treatment for people behind bars.

## ACLU of WISCONSIN STAFF

Christopher Ahmuty  
*Executive Director*

Renee Crawford  
*Associate Director*

Emilio De Torre  
*Youth & Program Director*

Larry Dupuis  
*Legal Director*

Marion Ecks  
*Development Assistant*

Stacy Harbaugh  
*Madison Community Advocate*

Jason Hargis  
*YCLC Program Associate*

Donovan Lee  
*Paralegal and Intake Coordinator*

Karyn Rotker  
*PRCL Senior Staff Attorney*

Angie Trudell Vasquez  
*Office Manager*

## ACLU of WISCONSIN BOARD of DIRECTORS

Erik Guenther  
*President*

Patti Keating Kahn  
*Vice President*

William H. Lynch  
*Secretary/Treasurer*

Jeralyn Wendelberger  
*National Board Representative*

Lori Gendelman  
*Executive Committee*

Stacey Herzing  
*Executive Committee*

Martin Alvarado

Jonathon Brostoff

Gwen Carr

Lori S. Eshleman

Lilith Fowler

Theresa R. Gabriel

James Hall Jr.

Azeeza Islam

Mildred Larson

Jo Deen B. Lowe

Jonathan David Marshall

Nancy Nusbaum

Gretchen Revie

Peter Rickman

Athan Theoharis

Ann Heywood  
*Chippewa Valley*

Martin Gruberg  
*Fox Valley*

Charlie Fox  
*Milwaukee Area*

# A SPECIAL THANKS to OUR FUNDERS...

The ACLU of Wisconsin Foundation would like to extend a special thank you to the Wisconsin foundations that have generously contributed to support our work. The ACLU of Wisconsin Foundation does not accept money from government institutions and relies exclusively on support from foundations and individual donors.



## THE BRICO FUND

### ▶ THE BRICO FUND

Guided by the values of interdependence, fairness, and equality, The Brico Fund aims to secure full participation in society for women and girls, to sustain our natural environment and to promote a just and equitable society. The fund supports ACLU of Wisconsin Foundation operations as well as the Youth Social Justice Forum which is celebrating its tenth year of teaching young people about active citizenship and individual rights.



### ▶ CREAM CITY FOUNDATION

The Cream City Foundation has been a catalyst for social change on behalf of lesbian, gay, bisexual and transgender people since 1982. The foundation supports our work on systemic discrimination that faces homeless and unattached LGBT youth in Wisconsin.



### ▶ COMMUNITY SHARES of WISCONSIN'S WORKPLACE GIVING SUPPORTS the ACLU of WISCONSIN FOUNDATION

The ACLU of Wisconsin Foundation is a member of Community Shares of Wisconsin and Community Shares of Greater Milwaukee. These groups organize workplace giving campaigns to support dozens of grassroots, nonprofit organizations that build social and economic equity and a healthy environment.

Community Shares raises funds for its member agencies through workplace giving campaigns at hundreds of private sector places of employment in Wisconsin. Public sector employees can also contribute to Community Shares and its member groups through their Combined Campaign. Together, the organizations raised over \$20,000 for the ACLU of Wisconsin Foundation in 2009.

When individuals support the ACLU of Wisconsin Foundation, their gifts can be designated so that the ACLU receives 100% of the donation. Community Shares administrative costs are kept low since all member organizations are active members of the board and provide volunteers to power outreach and fundraising tasks. Community Shares of Wisconsin and Community Shares of Greater Milwaukee bring together individuals, companies and organizations who share a vision of a better world. To learn more about workplace giving or to start a campaign at your workplace, visit [www.communityshares.com](http://www.communityshares.com) or [www.communitysharesmke.org](http://www.communitysharesmke.org).

## YOUTH

# ENGAGING TOMORROW'S CIVIL LIBERTARIANS THROUGH CREATIVE ACTIVISM and EDUCATION

Teaching young people about civil liberties is more than making them memorize the Bill of Rights. The ACLU of Wisconsin mixes hip hop, social networking, poetry and art with the basics of civil liberties like free speech, equal protection from discrimination and what to do when interacting with law enforcement. Youth program activities included:

- ▶ The tenth annual, day-long civic engagement program now known as the Youth Social Justice Forum that featured civil rights themed workshops, music and hands-on art instruction. Held at the University of Wisconsin Milwaukee campus, the event drew 350 students from 11 high schools from the greater Milwaukee area.
- ▶ ACLU Student Alliances in high schools and college campuses engage students in civil liberties education and activism. These groups cultivate the ACLU leaders of the future.



The Youth Social Justice Forum brings students together to learn about individual rights and freedoms.



Near right: High school students practice voting at a mock election. Far right: Activist-themed T-shirts become a tool for teaching about free expression.



## FINANCIAL REPORT

American Civil Liberties Union of Wisconsin Foundation, Inc.

### BALANCE SHEET MARCH 31, 2009

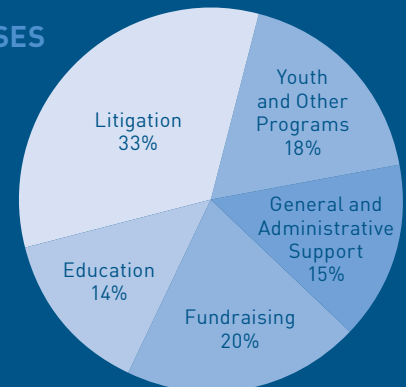
(with Summarized Totals for March 31, 2008)

ASSETS	2009	2008
Total Current Assets	\$ 126,736	\$ 730,167
Total Fixed Assets	9,821	12,718
Total Long-Term Assets	116,483	148,327
Total Other Assets	248,960	27,588
<b>TOTAL ASSETS</b>	<b>502,000</b>	<b>918,800</b>

### LIABILITIES and NET ASSETS

Current Liabilities	29,012	351,786
Other Liabilities	254,211	286,276
<b>TOTAL LIABILITIES</b>	<b>283,223</b>	<b>638,062</b>
Unrestricted Net Assets	7,867	24,538
Temporarily Restricted Net Assets	210,910	256,200
<b>TOTAL NET ASSETS</b>	<b>218,777</b>	<b>280,738</b>
<b>TOTAL LIABILITIES and NET ASSETS</b>	<b>502,000</b>	<b>918,800</b>

### EXPENSES



### INCOME

